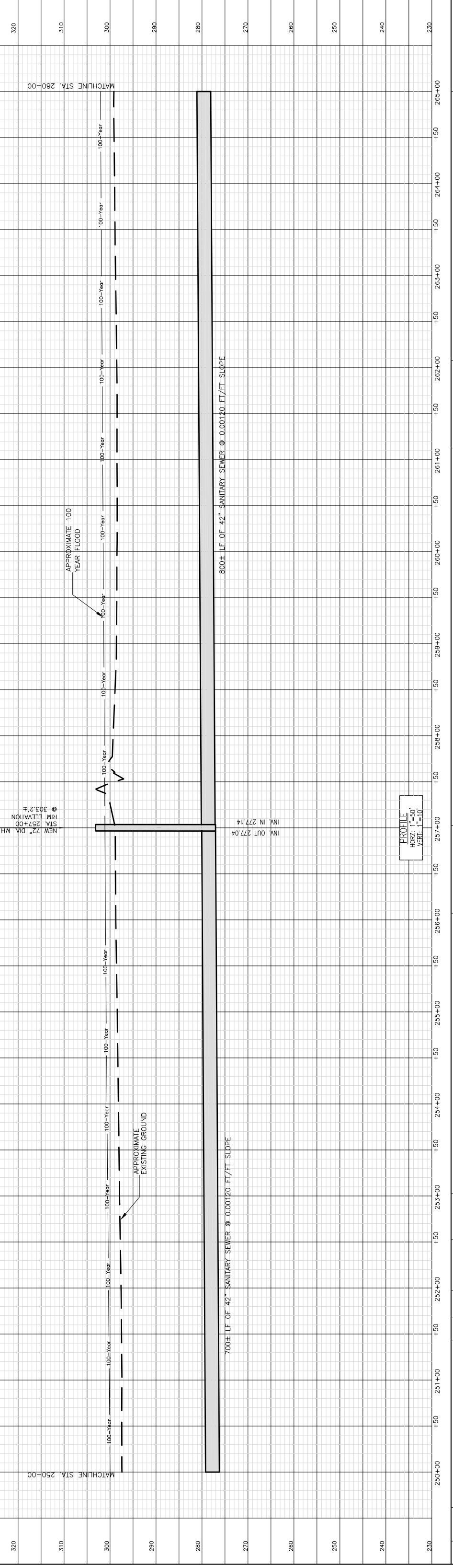


TBM STA. 259+50±  
 TOP OF 1/2" REBAR  
 ELEV.: 298.51'  
 N: 1973610.2573  
 E: 2436773.5143



CONTRACTOR NOTE: ALL EXISTING UTILITIES ON THESE PLANS ARE FOR INFORMATION ONLY. NO GUARANTEE IS OFFERED OR TO BE IMPLIED REGARDING THE ACCURACY OF THE LOCATIONS OF EXISTING UTILITIES. THE CONTRACTOR SHALL BE RESPONSIBLE FOR ACCURATELY DETERMINING THE LOCATION OF ALL EXISTING UTILITIES PRIOR TO CONSTRUCTION.



PROFILE  
 HORZ: 1" = 50'  
 VERT: 1" = 10'

PROJECT NO.	16535.05
CONTRACT	1
SHEET	C1.03
<b>DESOTO COUNTY REGIONAL UTILITY AUTHORITY</b> <b>UPPER CAMP CREEK INTERCEPTOR NORTH</b> DESOTO COUNTY, MISSISSIPPI	
<b>100% SET</b>	
DESIGNED	TMH
DRAWN	TMH
CHECKED	CRF
DATE	OCTOBER 2003
SCALE	AS NOTED
JOB NO.	16535.05
BY	APP'D
DATE	
NATURE	REVISIONS